

EXTERIOR HOLES IN SUPERIOR WALLS PANELS

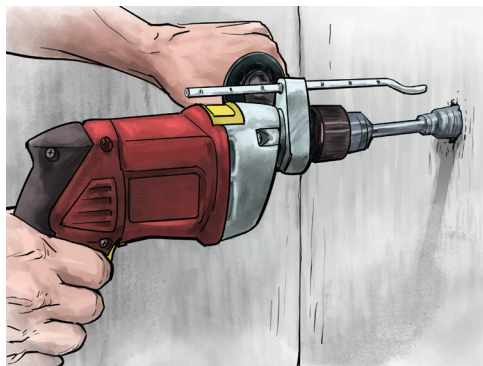
Any exterior holes that may be required for such things as sanitary soil lines, electrical service entrance cables, or chimney flues, should be made following these simple procedures below.

Please Note: Any exterior holes should be made between the studs of the Superior Walls panels.

1. Remove insulation from the interior of the wall panel and drill a pilot hole at the hole location, from the interior to the exterior side.



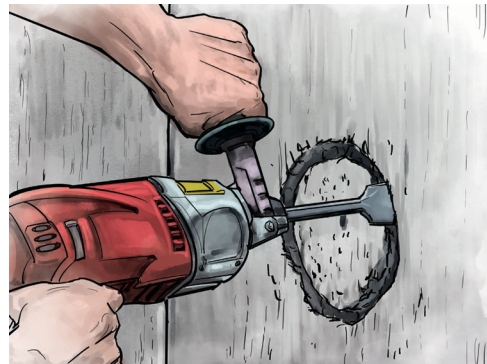
2. For small holes, use a core bit and hammer drill, always working from the outside of the wall.



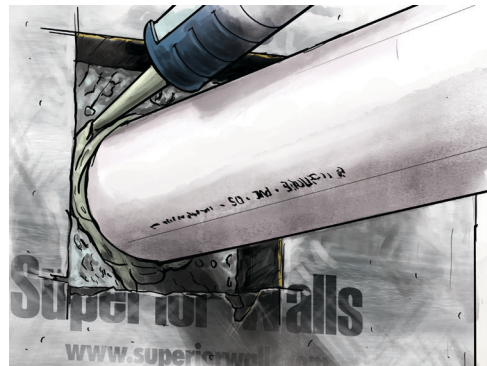
3. For larger holes, first trace the circumference of the desired hole. Then drill a series of holes around the perimeter of the tracing.



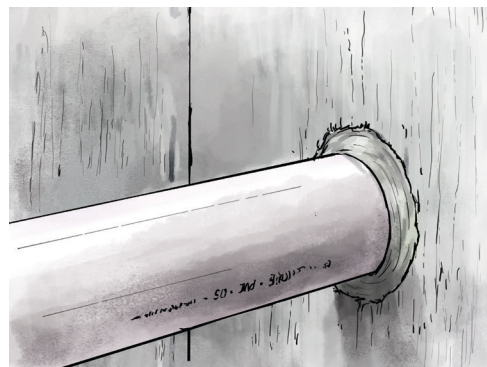
4. Use a chisel, always working from the outside in, to remove the concrete.



5. Inside, apply a one-part polyurethane sealant around the diameter of the hole.



6. Finish by sealing the outside with a one-part polyurethane sealant.



NOTE: Space the hole to avoid the concrete studs in the Superior Walls panel.

Code Official may require a 'relieving arch' around the pipe.

Seal carefully around pipe - standard wall warranty does not cover leaks around pipes.