

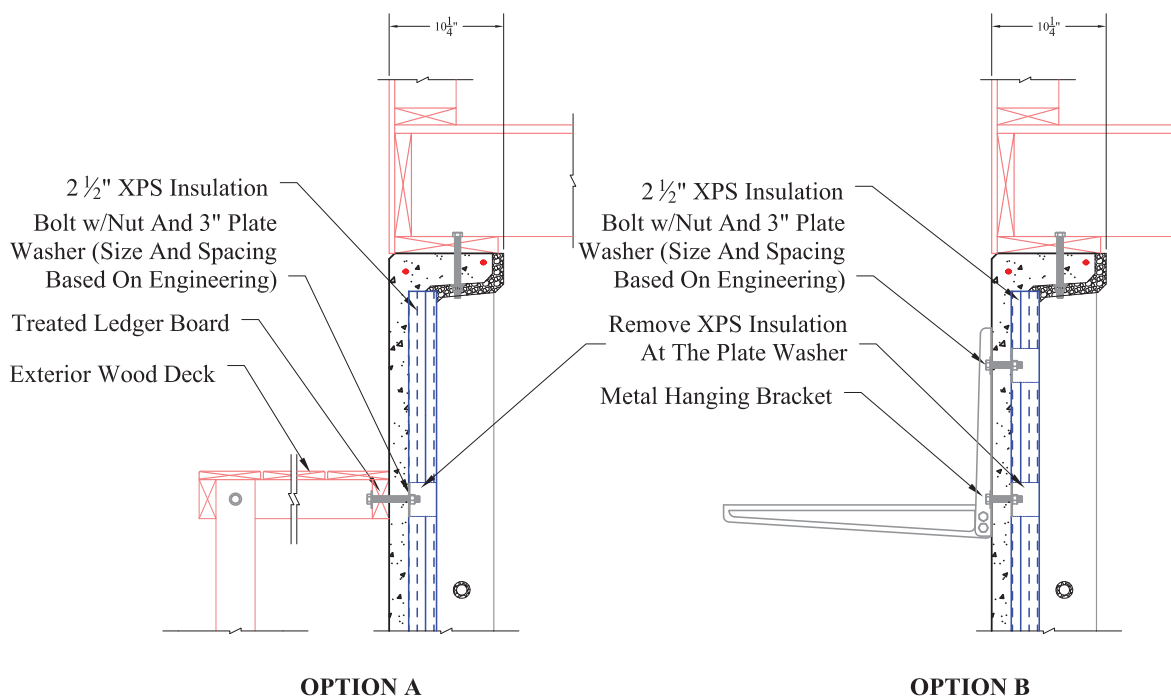
Attaching an AC Unit to a Superior Walls Panel

The following illustrations provide two optional methods that may be used to attach an AC unit mount or platform to the outside of a Superior Walls® foundation. The Xi Wall system is shown. For Superior Walls panels that did not use face-side rebar in the studs, a ledger board or metal bracket could also be secured to Superior Walls studs with 1/2" masonry screws/bolts.

CAUTION: A person competent in applying the structural design principles involved shall evaluate each project and specify site-specific connection details.

CAUTION: With the Xi Plus wall system, patch in the removed pieces of Thermax over the bolt hole locations and seal the Thermax seams with an Aluminum Foil Tape or equivalent (such as 3M HVAC Tape, Model #3381), or fill the bolting holes with a spray foam (such as GREAT STUFF™ insulating foam) and cover with an Aluminum Foil Tape, to repair the damaged Thermax surface.

A/C UNIT PLATFORM BOLTED THROUGH SUPERIOR WALLS PANEL



NOTE:
USE POLYURETHANE SEALANT AT BOLT HOLES
THROUGH SUPERIOR WALLS PANEL